



SOLAFLECT

ENERGY

CONFIDENTIAL AND PROPRIETARY

© 2025 SOLAFLECT ENERGY. ALL RIGHTS RESERVED.

Grid-Tied Charging is a **CHALLENGE**

- **Disruptive** *Digging and Installation*
- **Expensive** *Construction Project*
- **Electricians** *Interconnection*
- **Permitting** *Uncertainty/Delay*
- **Process** *Lengthy, Months or Years*
- **Recurring** *Repeat with EV Growth*
- **Fees** *Rising Rates, Demand Charges, Charging Network*





SOLAFLECT ENERGY

Apollo: Solution

- Off-Grid Solar EV Charger
- 25 Years of 'Fuel' Included
- 100% Clean Energy
- One Day Install
- Scalable & Relocatable
- Fixed-Price Energy *No Fees*



SOLAFLECT ENERGY

Apollo

EV CHARGING

- (4) Level 2 Chargers
- 64,000 Miles/Year Charge Capacity
- 1.6mm Lifetime Miles
- 25 Year Expected Life



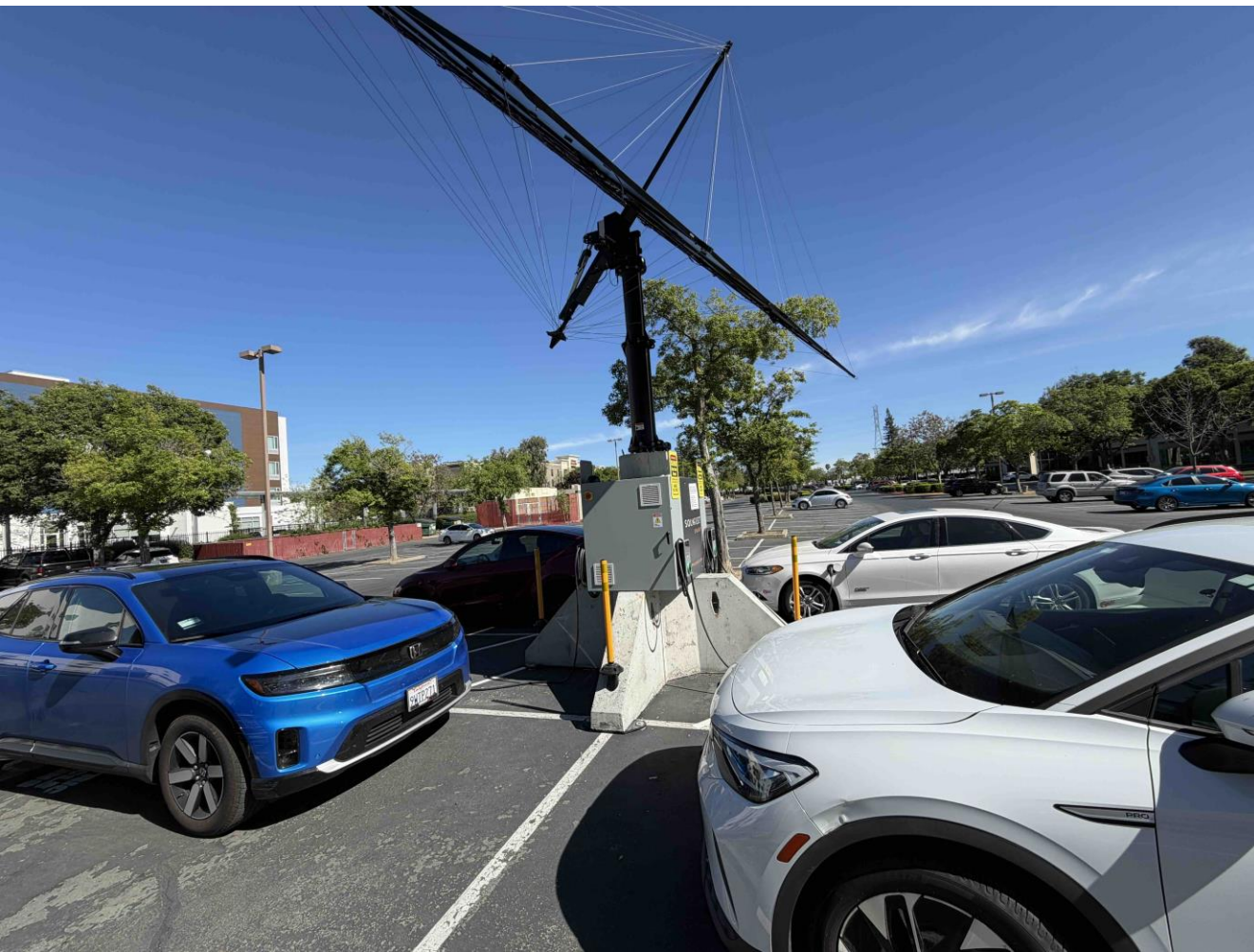
Apollo in West Sacramento



Apollo in West Sacramento



Apollo in West Sacramento



Summary

- Quick *non-disruptive deployment*
- Employee/Visitor/Resident Amenity *addresses growing need*
- Eliminates Fees *avoid rising utility rates or network fees*
- Sustainable *energy practices*
- Cost Neutral *or profit center over time*
- Marketing *branding/visual story benefit*

Rob Adams, COO, Solaflect Energy

radams@solaflect.com – (802) 299-7639



Appendix



Key Components



- Sol-Ark 8kW Hybrid Inverter
- 4 Autel Level 2 Chargers
- POWERSYNC 10.24kWh LFP Battery
- 6.56 kW array - 16 Axitec 410w solar panels

Recouping Cost from EV Drivers

Sample Assumptions:

16,000 kWh	Apollo annual charging capacity
\$0.40	2025 avg. price/kWh EV charging
6%	Average California annual utility rate increase

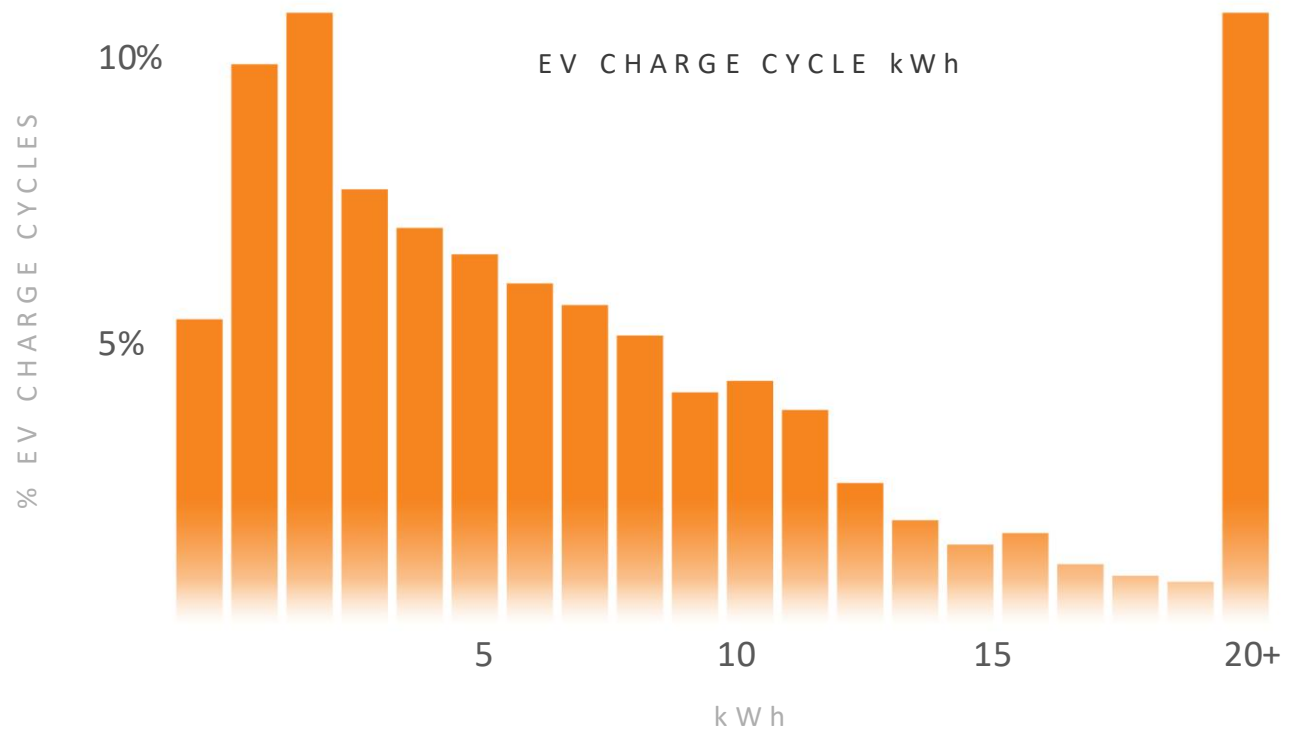
<u>Year</u>	<u>Price/kWh</u>	<u>Annual Value</u>
2025	\$0.40	\$6,400
2030	\$0.54	\$8,565
2035	\$0.72	\$11,461
2040	\$0.96	\$15,338
2045	\$1.28	\$20,526
2050	\$1.62	\$25,913

Total retail value of 25
years of Apollo power:

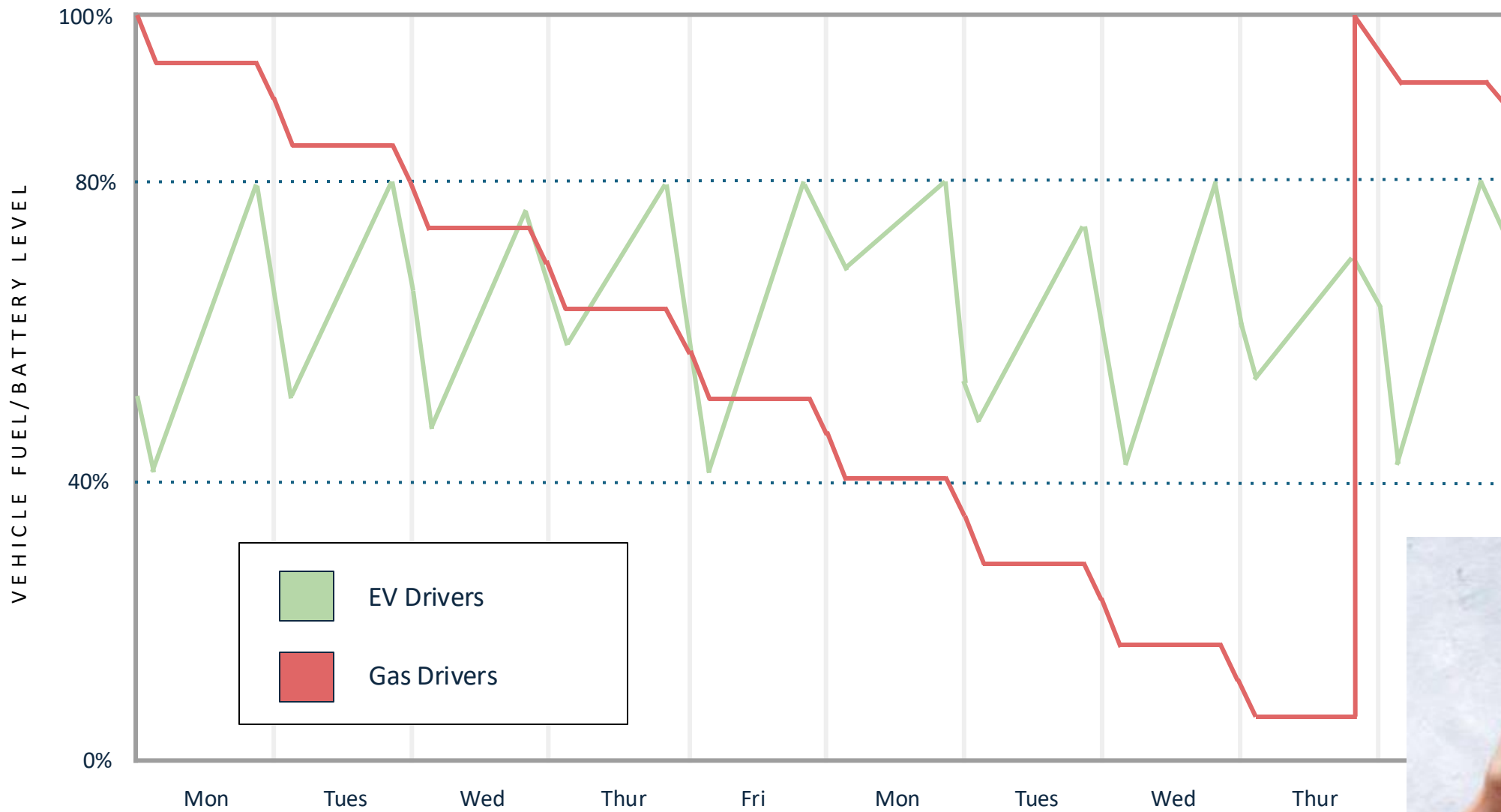
\$351,133

EV Drivers Only “Sip” at Chargers

- 70% of EV charge cycles are 10kwh or less
- 98% of roundtrips are 38 miles or less
- That’s less than 2 hours on Level 2 grid-tied charger



APOLLO TWO WEEK SAMPLE – EV DRIVERS ‘TOP OFF’



SOLAFLECT ENERGY

Sample Installations



2,000+ EMPLOYEE BUSINESS



UNIVERSITY

SOLAFLECT ENERGY

Sample Installations



COLLEGE



SMALL BUSINESS

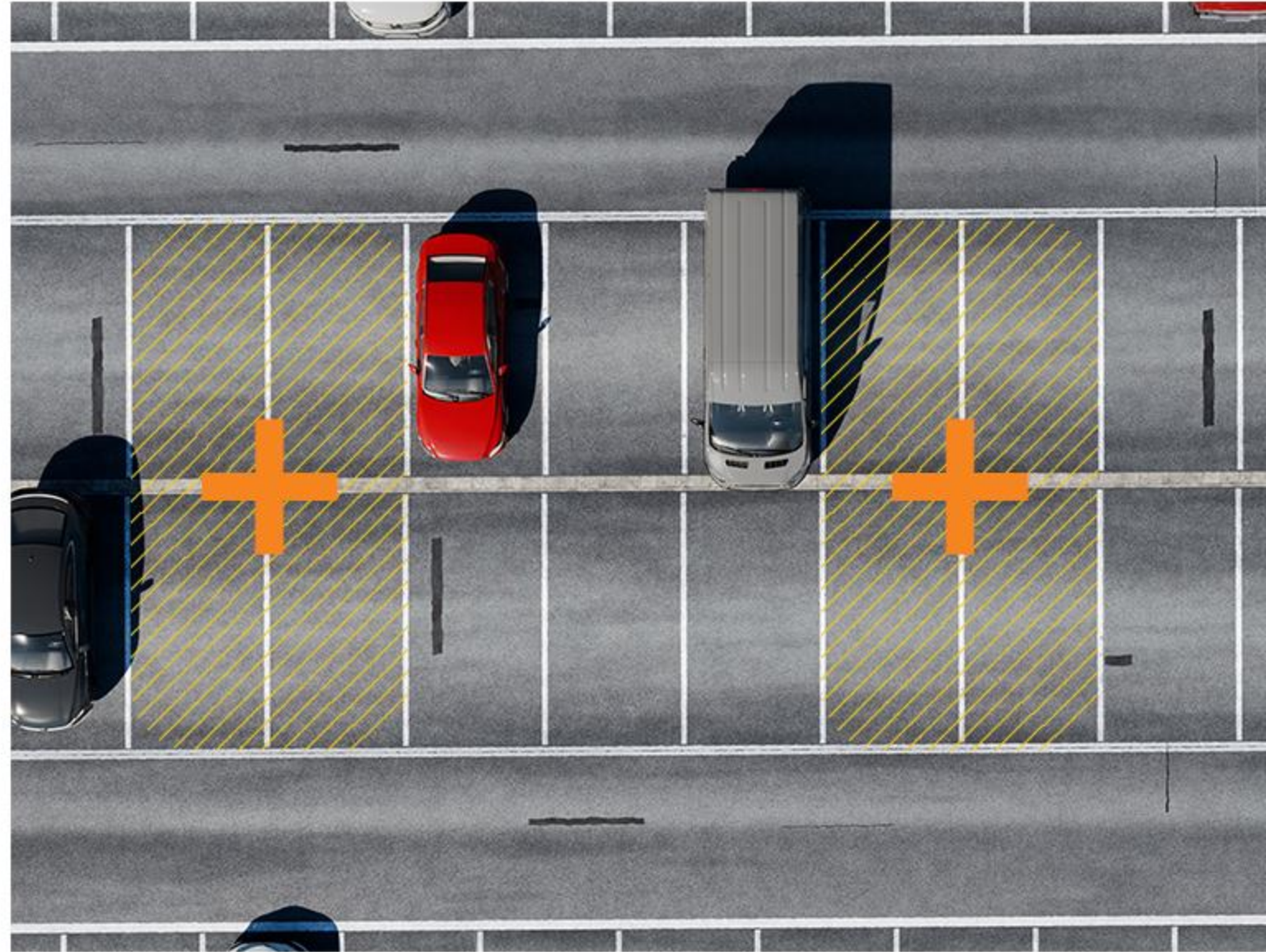
Ease of Scalability



1 Apollo Installed



4 Spaces Electrified



SOLAFLECT ENERGY

Apollo EV Charging: A 'Complement' to Grid-tied EV Charging

- Relieves grid-tied charger congestion
- Apollo removes 4 EVs from 'pool' jockeying for time on grid-tied
- 100% clean energy
- No burden on grid capacity
- No utility demand charges



SOLAFLECT ENERGY

Stowing in High Winds

Minimizes long term wear and tear



TRACKING NORMALLY



STOWING FOR HIGH WINDS