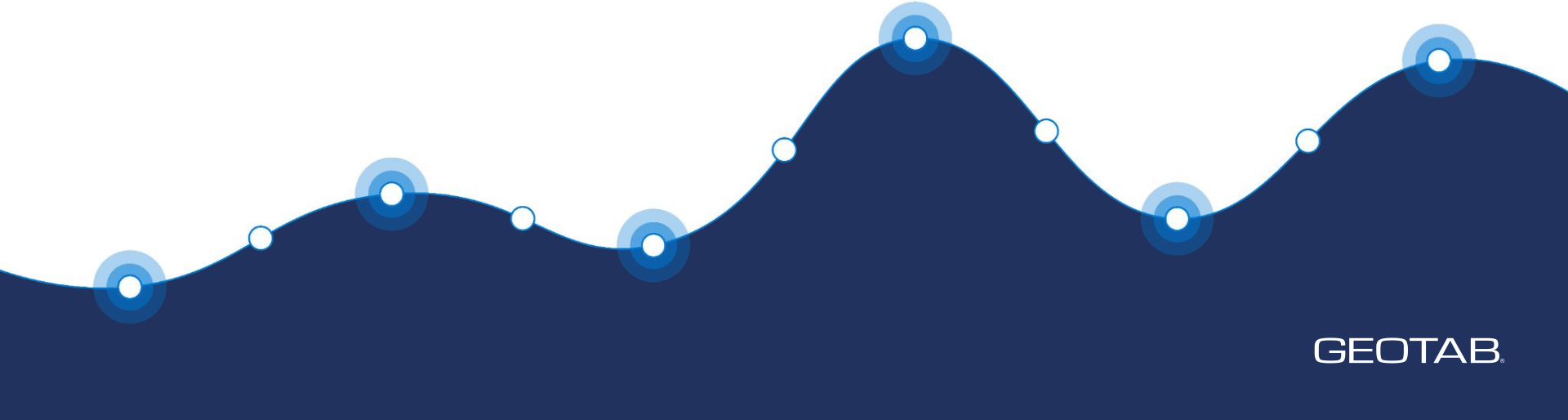


Asset Utilization

NorCal Clean Cities

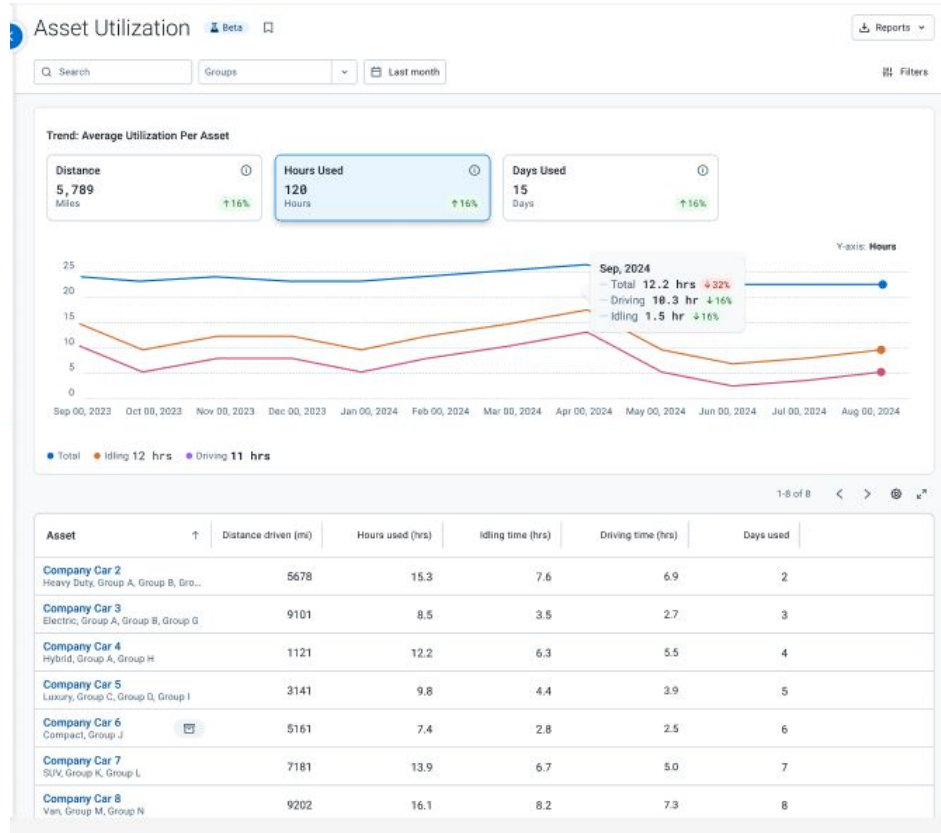
Jan 2026



Why measure asset utilization?

- A. Extend service life
 - Rotate vehicles to balance age with wear / tear
- B. Plan retirement / end of life activities
 - Sell now or later? Optimize resale value
- C. Plan procurement activities
 - How many vehicles (and which type) should we procure next year?
- D. Optimize daily operations to meet service demand
 - Should we move vehicles to another division, where they can be put to better use
 - Are we using EVs to their fullest potential?
- E. Right-size the fleet
 - Save on capital and operating expenses
 - Keep the minimal number of assets needed to get the job done
- F. Other?

Asset Utilization (beta) - Live Demo



Where do you ideally want to interact with utilization data?

- A. BI tool
 - PowerBI, Tableau, Looker Studio, etc
- B. Spreadsheet
 - Excel, google sheets, etc
- C. myGeotab
 - The Geotab user interface
- D. FMIS
 - AssetWorks, Fleetio, etc
- E. Other?

What data do you need for lifecycle planning?

- Vehicle age (model year)
- Odometer (lifetime)
- Engine hours (lifetime)
- Asset class (pickup, passenger, HD truck)
- Downtime
- PTO time
- Device offline time
- Breakdown events (history)
- Breakdown risk (prediction)
- Maintenance cost (history)
- EV battery usage (start / end of day SOC)
- EV battery health
- Fuel efficiency
- Other?

Asset Utilization - Timeline

February

- Grant early access to a handful of beta testers

March

- Conduct feedback interviews with every beta tester

March - May

- Product improvements

June

- General availability release

Learning goals for beta phase

- What are you trying to accomplish with your utilization data?
- How do you interact with your utilization data?
 - Grouping, filtering, sorting, etc
- What friction points exist with our current UI, and how can we make it easier to use?
- What is missing? What else do you need?

Sign up for early access to Asset Utilization



https://geotabinc.qualtrics.com/jfe/form/SV_3ZQvZt8ZoYzH4a

